

# **AG HERITAGE RESOURCE KIT**

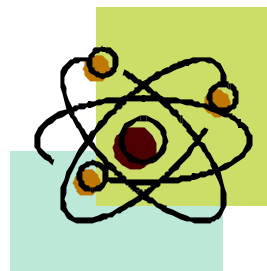
## **SCIENCE & TECHNOLOGY CURRICULUM**



**LEVELS 1- 6**



# CONTENTS



## ☐ SCIENCE CURRICULUM

	<b>Page</b>
<b>Physical World</b>	
Level 1-6 .....	3
<b>Material World</b>	
Level 3-6 .....	4
<b>Planet Earth</b>	
Level 1-2 .....	5

## ☐ TECHNOLOGY CURRICULUM

<b>Technical Knowledge &amp; Understanding</b>	
Level 1-6 .....	6
<b>Technology &amp; Society</b>	
Level 2-6 .....	7
Contact Details.....	8

# PHYSICAL WORLD



## DAIRY MUSEUM

- LEVEL 1** Describe in simple terms how a milking machine works.
- LEVEL 2** Describe in simple terms how a milking machine works.
- LEVEL 3** Investigate and describe how a milking machine works.
- LEVEL 5** Investigate how a physical device or system can be used to perform a specific function, i.e. milking shed system, rotary shed.
- LEVEL 6** Investigate and report on how physical principles are used: Milking shed system, rotary shed, pasteurising, separating.

# MATERIAL WORLD



## DAIRY MUSEUM

- LEVEL 3** Investigate and report on temporary and more permanent changes that familiar materials undergo:  
Making butter, cheese, pasteurising milk.
- LEVEL 4** Investigate and describe some ways of producing permanent or temporary changes in some familiar materials:  
Making butter, cheese, pasteurising milk.
- LEVEL 5** Research and describe how selected materials are manufactured and used in everyday goods:  
Milk into cheese, butter, cream, milk powder, yoghurt, whey.
- LEVEL 6** Investigate and describe the applications and effects of chemical processes:  
Dairy products that are produced as a result of a chemical process.

# PLANET EARTH



## PEAT FARMING

**LEVEL 1** Suggest ways that the physical environment was different in the past.

Discuss the process of breaking in of farm land.

**LEVEL 2** Investigate easily observed physical features and patterns and consider how the features are affected by people.

Discuss the process of breaking in of farm land.

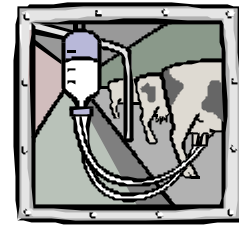
# TECHNICAL KNOWLEDGE AND UNDERSTANDING



## DAIRY MUSEUM

- LEVEL 1** Share ideas about how a particular group of people carry out technological activities.
- LEVEL 2** Describe how particular groups of people carry out technological activities.
- LEVEL 3** Investigate and describe the use and operation of technology in the milking shed.
- LEVEL 4** Investigate and describe the use and operation of a range of technologies in the milking shed.
- LEVEL 5** Investigate and discuss the relationship between the use and operation of technologies.  
Investigate and describe how systems work together as part of a larger system in the milking shed.
- LEVEL 6** Investigate and discuss in detail the relationship between the use and operation of technologies in the milking shed.  
Analyse the structure, organization and control of the system in the milking shed.

# TECHNOLOGY AND SOCIETY



## DAIRY MUSEUM

**LEVEL 2** Explore and compare the roles of some examples of technology in daily life in their own and another time or place:

The development of the milking shed.

**LEVEL 3** Describe and identify the positive and negative effects of some instances of technologies and the environment:

The milking shed.

**LEVEL 4** Explore and discuss the impacts over time on the local and wider environments and society of some specific technology:

The dairy industry.

**LEVEL 5** Investigate and describe the present impact and possible future effects of some instances of rapidly changing technology:

The dairy industry.

**LEVEL 6** Identify and assess the factors that affect the ways different groups have responded to, promoted, or inhibited some technological innovation:

The dairy industry.

**☐ FOR FURTHER INFORMATION PLEASE CONTACT:**

The Curator  
Ag Heritage  
Mystery Creek Events Centre  
Private Bag 3206  
Hamilton

info@agheritage.co.nz  
www.agheritage.co.nz

Ph 07 8434497  
Fax 07 8438572